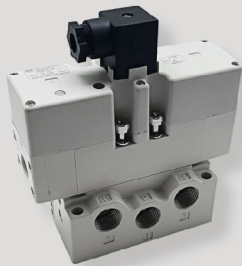
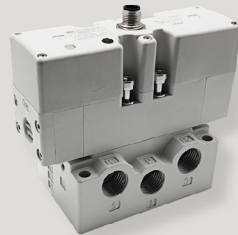


KIS series



EN175301-803:2006
(The order model DIN 43650 A) Connector V/V



M12xP1 A Code (4Pin) Plug V/V



EN175301-803:2006 Type
(The order model DIN 43650 A) Connector



M12xP1 A Code (4Pin) Plug

How to order

KIS 2 - S - 2 D - SB - A04

① ② ③ ④ ⑤ ⑥ ⑦

① Series

1	Size1(Valve width:38mm) -Under development
2	Size2(Valve width:50mm)

③ Voltage

1	AC100V 50Hz/110V 60Hz
2	AC200V 50Hz/220V 60Hz
3	DC 24V
4	DC 12V

⑥ Thread type

Nil	Rc(PT) (Standard)
G	G(PF)
N	NPT

② Valve type

Valve type	Symbol
S Single	
D Double	
H Closed center	
I Pressure center	
J Exhaust center	

④ Electricalconnection

D	EN175301-803:2006(Standard) (The order model DIN43650A) Connector
C	M12xP1 A cord plug(Order)

⑤ Sub Base

Nil	None
SB	With Sub Base

⑦ Port size

Code	Port	Thread size		Remark
		1(P),2(B),4(A)	3(R2),5(R1)	
A02	Side port	1/4	3/8	Size1
A03		3/8		Size1,2
A04		1/2		Size2
B02	Bottom port	1/4	3/8	Size1
B03		3/8		Size1,2
B04		1/2		Size2

※ KIS1(Size1) Sub-base is not A04, B04 model.
※ KIS2(Size2) Sub Base is not A02, B02 model.

Specifications

Code	KIS1(Size1)			KIS2(Size2)		
	S	D	H / I / J	S	D	H / I / J
Valve type	S	D	H / I / J	S	D	H / I / J
Fluid	Air, Inert gas					
Port size	Rc(PT)1/4, 3.8			Rc(PT)3.8, 1/2		
Effective sectional area Smm ² (Cv)	20.2mm ² (1.1)	20.2mm ² (1.1)	16.6mm ² (0.9)	52mm ² (2.8)	52mm ² (2.8)	48mm ² (2.6)
Operating pressure	0.2~1.0MPa	0.15~1.0MPa	0.2~1.0MPa	0.2~1.0MPa	0.15~1.0MPa	0.2~1.0MPa
Normal Voltage	AC110/220V 60Hz, DC12/24V					
Power consumption	1.5W					
Ambient temperature	-5°C ~ +50°C(No. freezing)					