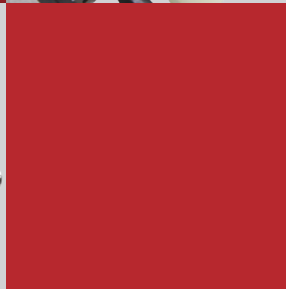
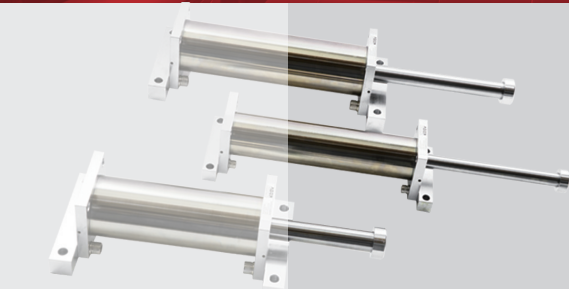
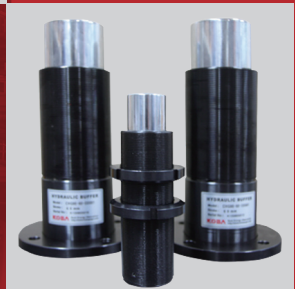




Hydraulic Shock Absorber Buffer



Softly
Safely
Smoothly

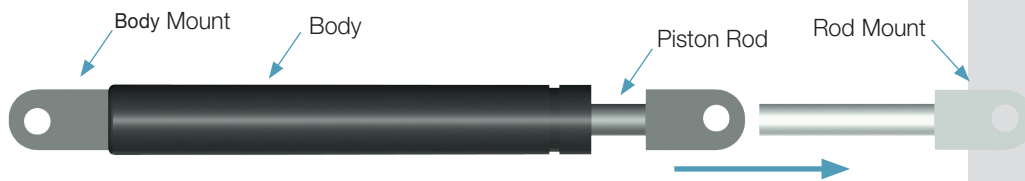


KOBA
Best Energy Absorption
www.kobapage.com

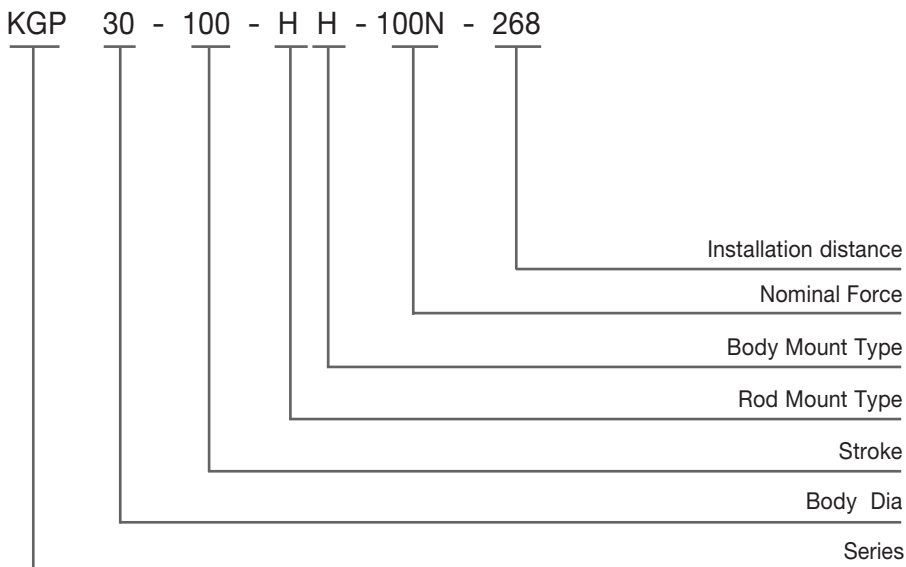


Feature

- KGP is Pull type gas spring. It is widely used to operate mechanical covers with low strength to open/close covers on machines/tanks that operate horizontally, KOBA supply Customer Products for size, stroke, material, etc.
- Temperature : Standard (-10~60℃) Special (-30~100℃)

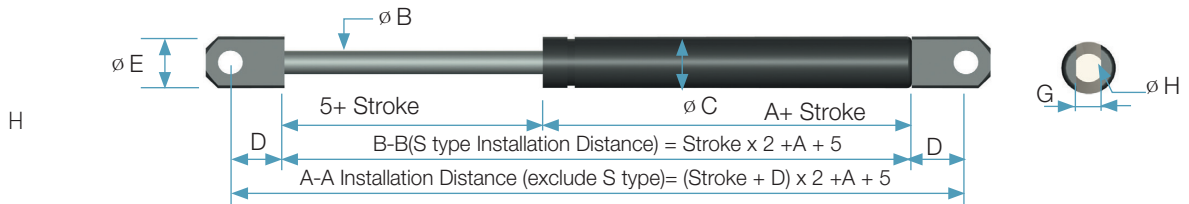
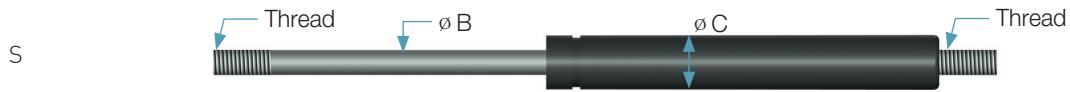


KGP Series Ordering Information



KGP 22, 30, 35, 40, 50, 75 Series

Type	Rod Mounting	Piston Rod	Body	Body Mounting
------	--------------	------------	------	---------------



Dimension (unit : mm)

Model	Max Stroke	A	B	C	Mount Type	D	E	F	G	H	Thread	Max Force (N)
KGP22	300	80	10	22	S	10	-	-	-	-	M8x1.25	Below 200
					R	22	18	14	-	-	M10x1.5	
					H	19	22	-	10	10.1	-	
KGP30	350	90	12	30	S	18	-	-	-	-	M10x1.5	Below 900
					R	22	18	14	-	-	-	
					H	35	30	-	20	15	-	
KGP35	400	125	14	35	S	22	-	-	-	-	M12x1.75	Below 1,200
					R	50	19	30	-	-	-	
					H	35	30	-	20	15	-	
KGP40	500	130	16	40	S	25	-	-	-	-	M14x2	Below 1,500
					R	57	21.5	42.5	-	-	-	
					H	40	35	-	28	16	-	
KGP50	700	130	25	50	S	35	-	-	-	-	M20x1.5	Below 2,000
					R	78	27	43	-	-	-	
					H	50	50	-	34	20	-	
KGP75	1,000	130	25	75	S	41	-	-	-	-	M24x2.0	Below 3,000
					R	94	30	51	-	-	-	
					H	70	60	-	40	30	-	

www.kobapage.com



KOBA
Best Energy Absorption



KOBA Co., Ltd.

12F, A BLOCK, KABELGREATVALLEY 32
DIGITALRO – 9GIL, GUMCHEON-GU, SEOUL, KOREA
Tel : +82-2-3397-7800 Fax : +82-2-3397-7811 E-mail : koba@koba.co.kr

Authorized Distributor



SAVANTEC AUTOMATION PRODUCTS

No.3&4, First Floor , Shop No.5, Mogappair Road,
Mannurpet, Padi, Chennai – 600050. Tamil Nadu, India.
Email ID : savantecap@gmail.com / info@savantecap.com
PH : 044-48568963 / +91 73583 12666
WEBSITE : www.savantecap.com

※The specifications in catalog are subject to change without notice in order to improve performance